

## EVOLVE

With the design of Evolve we focused upon intuitive comfort and simple user adjustment. The inclusion of flexible seat and back membranes enhance comfort and flexibility whilst also delivering excellent thermal benefits to the user. A comprehensive suite of dimensional adjustments and a progressive synchronous tilt action complete the solution.

Whether the user is focusing on a task, reaching for a file or deep in conversation, the chair flexes with their natural movements, providing both comfort and health benefits. Evolve is available in a choice of colours for the moulded components and complementary coloured flexible back membranes.



**Design by Paul Brooks**

### Standard Features (\*Selected models only)

- 5 Star base
- 65mm Hard wheel castors
- Synchronised mechanism with adjustable tension and multi-position back lock
- 60mm seat depth adjustment
- Three degree negative seat tilt
- Flexible seat and back membrane
- Airflow mesh back\*
- Slimline back upholstery\*
- Height adjustable arms\*
- Height adjustable arms with multi-functional arm pad\*

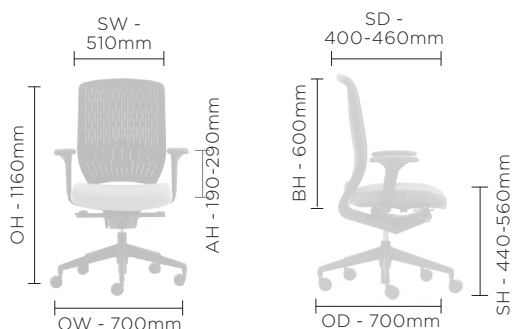
### Optional Features

- Castors for hard and soft floor coverings
- Gas lift options
- Adjustable lumbar support
- Two-tone upholstery\*
- Polished Aluminium arm carrier
- Choice of finish options available – see finish page

### Performance Standards

- EN1335 -1:2000
- BS5459-2:2000+A8:2008
- GS certified
- EN1335 -2 / 3:2009
- ANSI/BIFMA X5.1:2011
- SCS-EC10.2-2007 Indoor Air Quality

## DIMENSIONS



## DESIGN

**Paul Brooks**



Paul Brooks graduated from Ravensbourne College of Design to go onto the RCA before joining the design team of Robert Heritage, OBE RDI, in 1983.

Paul established his own practice in 1988 and has since worked with a host of UK and European furniture manufacturers becoming a well established figure in the design community with many highly successful designs to his credit.

## EVOLVE

With the design of Evolve we focused upon intuitive comfort and simple user adjustment. The inclusion of flexible seat and back membranes enhance comfort and flexibility whilst also delivering excellent thermal benefits to the user. A comprehensive suite of dimensional adjustments and a progressive synchronous tilt action complete the solution.

Whether the user is focusing on a task, reaching for a file or deep in conversation, the chair flexes with their natural movements, providing both comfort and health benefits. Evolve is available in a choice of colours for the moulded components and complementary coloured flexible back membranes.

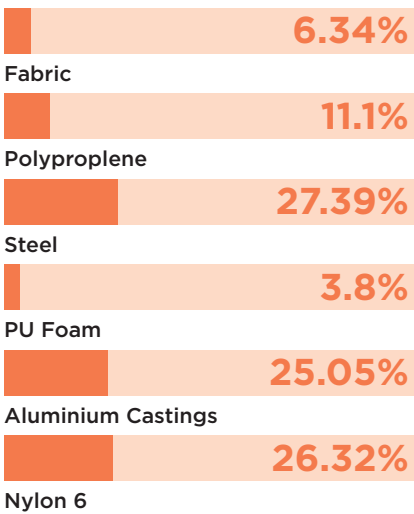


Design by Paul Brooks

## ENVIRONMENTAL

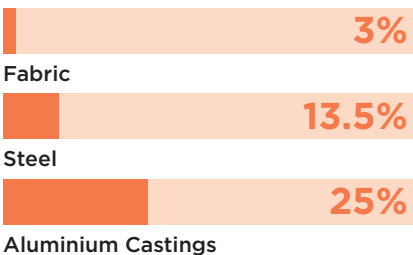
### Material Content

Components are constructed of the following



### Recycled Content

Contains up to 41.5% of Recycled Material



### Recyclability

The range is 99% recyclable

99%

Environmental information for this range has been based on EV640HA.  
For more detail please refer to individual EPA sheets.

## SENATOR 3 R'S

Senator is committed to continually improving the sustainability of all environmental aspects within our business.

To meet both international standards and our own environmental targets we apply the three R's principle

**-Reduce, Reuse and Recycle.**

Whilst recycling is the element which receives the most exposure it is actually the last option available and should never be the prime target in anyone's battle to reduce waste.

It is our duty as individuals and as a company to initially attempt to **Reduce** usage. Then we should look to **Reuse** wherever possible and finally, only after these two processes have been exhausted, should we consider **Recycling**.

Reduce  
Reuse  
Recycle

EVOLVE

Finish Options

5 Star base available in either Black Plastic or Polished Aluminium

3D airflow mesh back available in Black, Grey or White

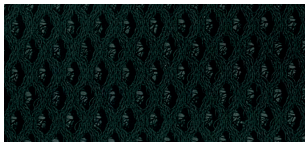
Plastic components available in Black

Plastic back membrane is available in Black

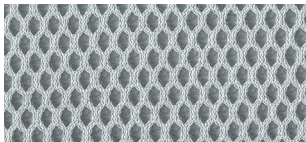
Black or Polished Aluminium arm carriers\*

Evolve can be upholstered in a broad range of contract upholstery fabrics, vinyls and leathers from The Senator Group standard upholstery collection

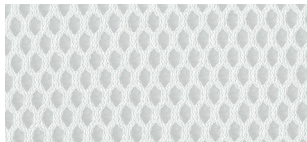
Airflow Mesh Colours



Black



Grey



White

Component Finish



Black

Plastic Back Membrane

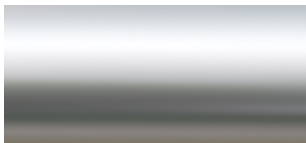


Black

Base Finishes



Black (Plastic)



Polished Aluminium