

I-WORKCHAIR 2.0

Thanks to our latest 3D knit technology, i-Workchair is now better than ever before.

We went back to the drawing board to refine i-Workchair's silhouette, sculpting it to make it sleeker, more comfortable, and more lightweight, beautifully finished in seven new colours each made using our 3D knit technology.

Design by Justus Kolberg



Standard Features (*Selected models only)

- 5 Star base
- 65mm Hard wheel castors
- Synchronised mechanism with tension adjustment and back locking function in 3 positions
- Dual density seat foam
- 60mm Seat depth adjustment
- Technical outer fabric back
- 3D Technical knit fabric inner back with 3D cut perforated foam core
- Aluminium back frame

- 80mm Adjustable lumbar support
- Height adjustable arms with multifunction arm pad
- Fully adjustable headrest with coat hanger*

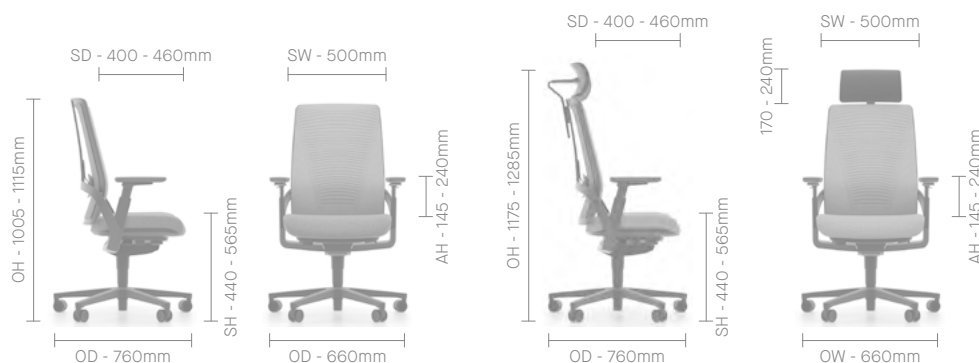
Optional Features

- 60mm Black soft wheel castors with a chrome ring inlay
- 65mm Soft wheel castors
- Choice of finish options available – see finish page

Performance Standards

EN1335 -1:2000
BS5459-2:2000+A8:2008
EN1335 -2 / 3:2009
ANSI/BIFMA X5.1:2011
EN ISO 9241-5:1999

DIMENSIONS



DESIGN

Justus Kolberg

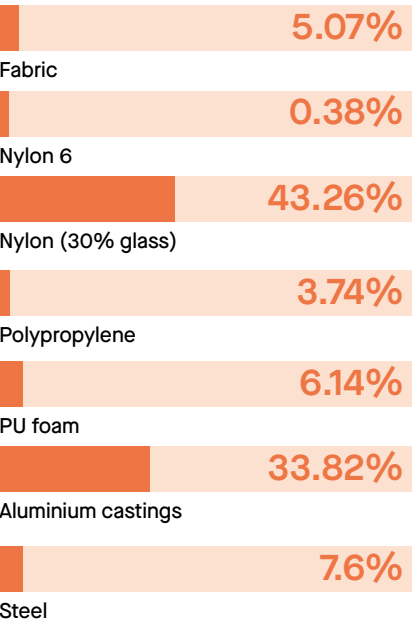
Justus Kolberg has been running his own design studio in Hamburg since 1997 after completing his studies in industrial design at the Muthesius Academy of Fine Arts and Design in Kiel in 1990.

Justus has received numerous honours including the IF Hannover Product Design Award, the Red Dot Design Centrum NRW, the IDEA-Gold Industrial Design Excellence Award and the Japanese Good Design Award.

ENVIRONMENTAL

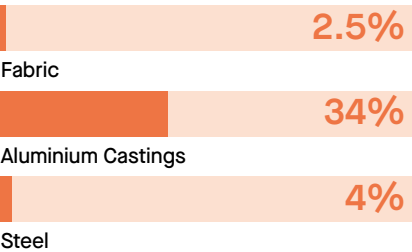
Material Content

Components are constructed of the following



Recycled Content

Contains up to 40.5% of Recycled Material



Recyclability

The range is 99% recyclable

99%

Environmental information for this range has been based on WRKN140MF.
For more detail please refer to individual EPA sheets.

SENATOR 3 R'S

Senator is committed to continually improving the sustainability of all environmental aspects within our business.

To meet both international standards and our own environmental targets we apply the three R's principle

-Reduce, Reuse and Recycle.

Whilst recycling is the element which receives the most exposure it is actually the last option available and should never be the prime target in anyone's battle to reduce waste.

It is our duty as individuals and as a company to initially attempt to **Reduce** usage. Then we should look to **Reuse** wherever possible and finally, only after these two processes have been exhausted, should we consider **Recycling**.

Reduce
Reuse
Recycle

FINISHES

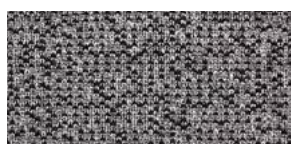
Options

- 5 Star base finished in Black
- Aluminium back frame finished in Black powder coat
- Plastic components finished in Black
- 3D Technical knit fabric inner back available in Onyx, Blue Drift, Stone, Oyster White, Forest, Zinc and Berry
- Dual density seat foam in complementary knit fabric or woven fabric

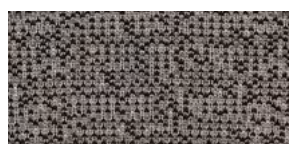
Technical Knit (Seat and Back)



Onyx



Zinc



Stone



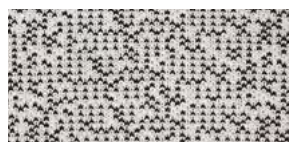
Berry



Forest

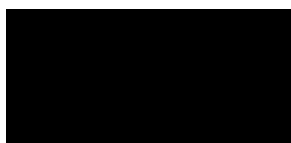


Blue Drift



Oyster White

Woven Seat (Optional)



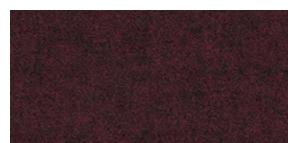
Onyx



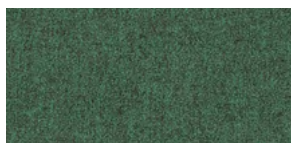
Zinc



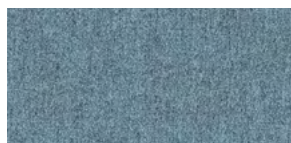
Stone



Berry



Forest



Blue Drift



Onyx for Oyster White