

Mews

Habitats for a New Work Landscape

boss

Mews

From Boss Design



A destination space for a new era.

Positive Spaces⁺

Using the Negative

Positive Spaces⁺

Remove the Negative Concept

Exploring the space around Mews is just as rewarding as Mews itself. We took the negative space, which is the space between, and surrounding an object, to form another space. The Mews pods can be the focus of the space, but the negative space can be just as important creating ideal spaces for collaborations and bonding with others. Mews removes the negative and make positive spaces.



Discover your natural habitat in the new work landscape

It's clear that remote and hybrid working is here to stay, even after the pandemic recedes. While some workers will gradually find their way back to in-person workplace settings, this is just the beginning of working from anywhere for many others. Research by LifeSize states that video meetings improve productivity by 50%, and 90% of people find it easier to get their point across. With 76% of us using video conferencing for remote work. These permanently hybrid and remote teams need the space and tools to communicate and collaborate just as effectively and perhaps more frequently than before. The Mews landscape habitats are designed to fulfil the needs of the modern workplace.

Mews enhances the ergonomics of your space through air quality, temperature and lighting to create habitats that improve the quality of work, connection, and collaboration.



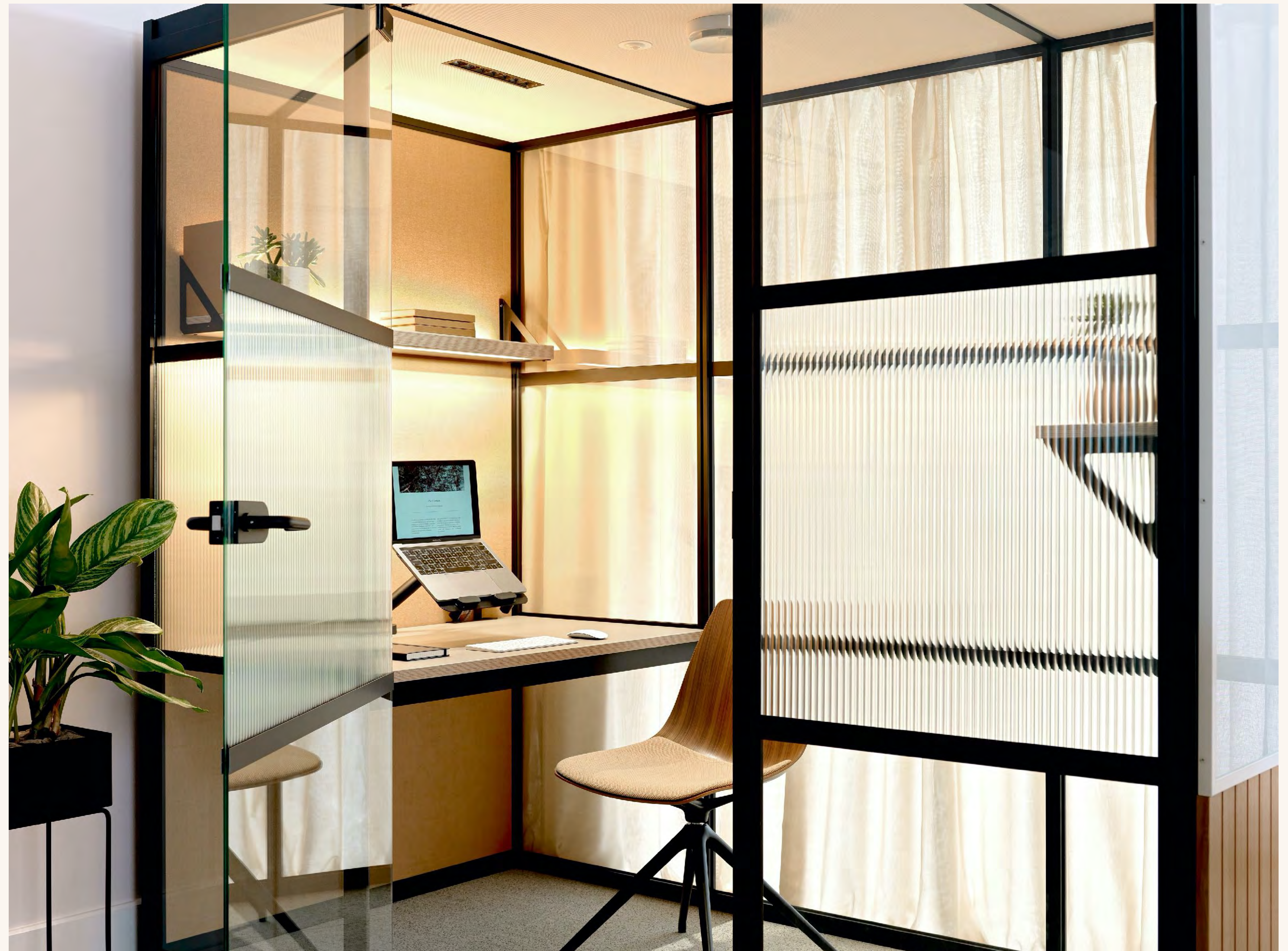
“We used to rely on architectural intervention to divide spaces and define privacy, the new workplace landscape has shifted to habitable spaces with high levels of function and flexibility. But we need more. Spaces that not only work well but make us feel good too.”

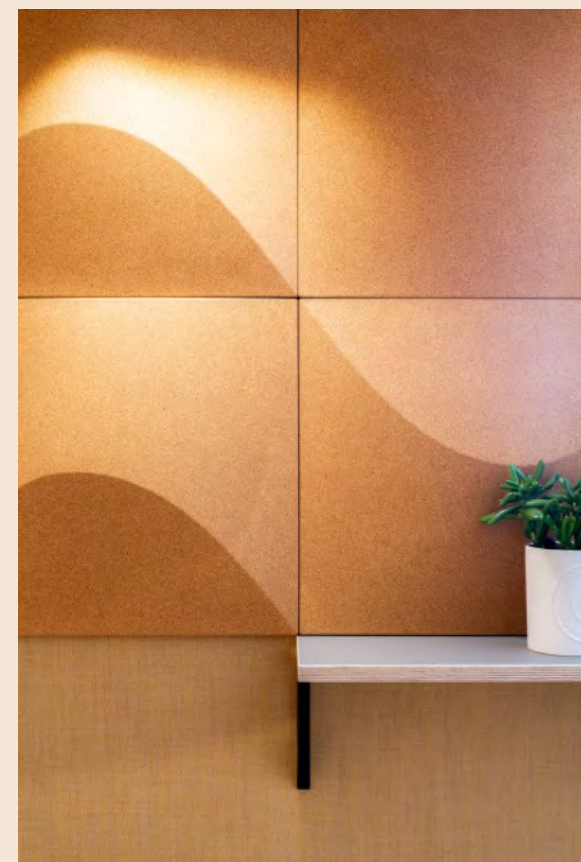
boss

Mews

Focus

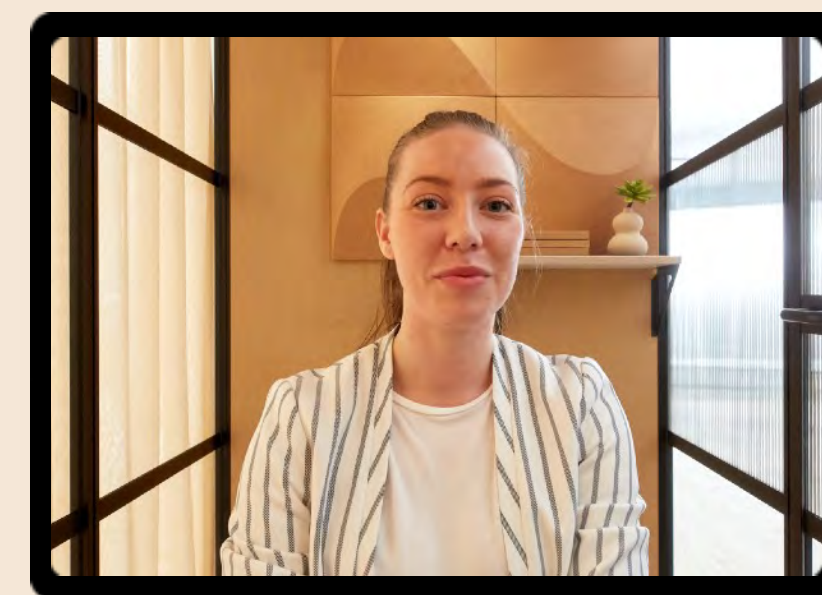
A quiet space designed for visual and acoustic privacy. Lighting modes created for video conferencing and prolonged pieces of work with ventilation that maintains comfortable temperature and quality of air.





Lighting Design

Video Conferencing

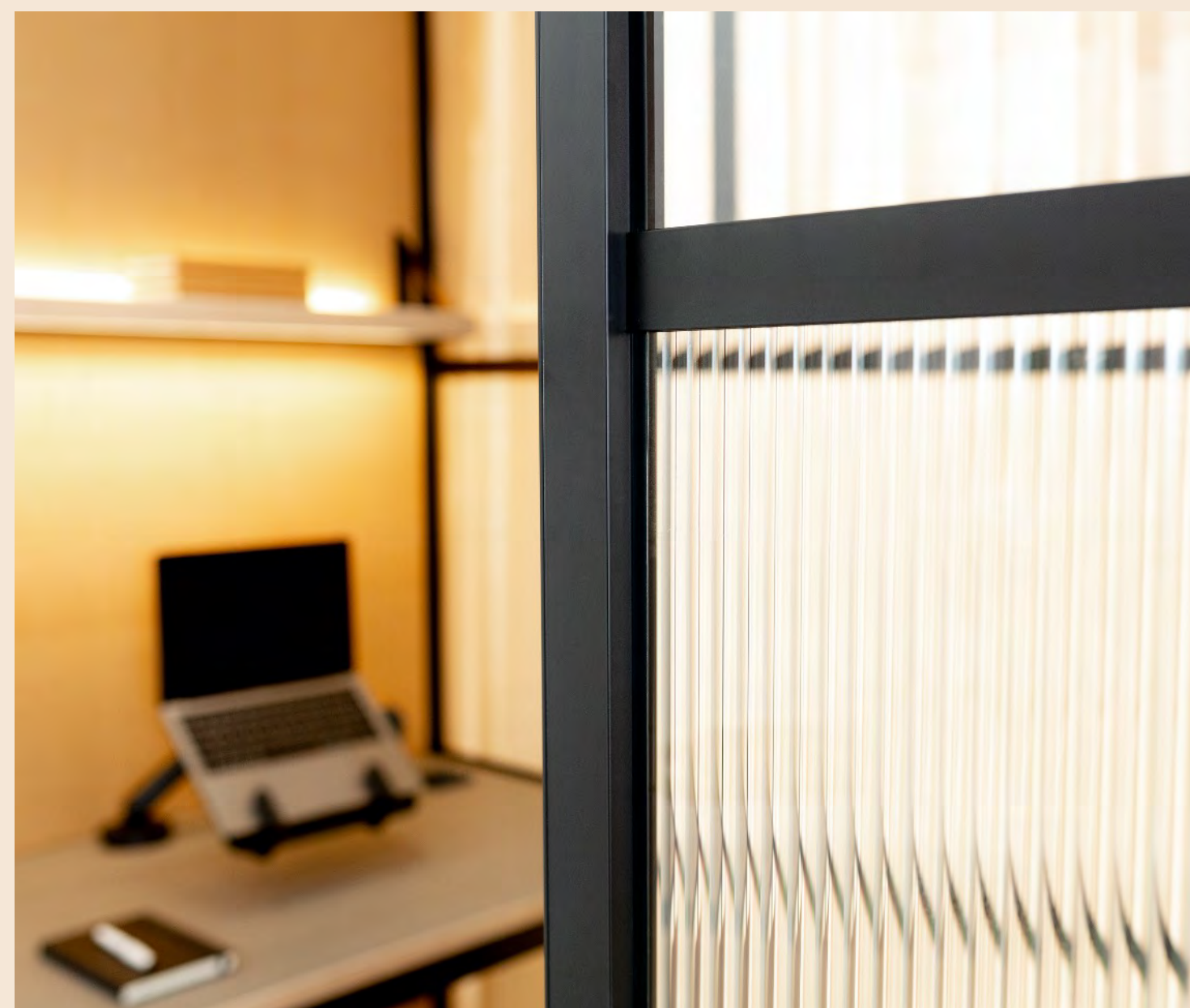


Lighting

We have all become very aware of how we look on camera, from the first moment we log in to our video call to the moment we catch a glimpse of our faces on the attendee screen. Having that human connection is vital to gauge response and better understand the conversation. Creating a flattering environment to be seen is paramount, boosting confidence and projecting the right message for your brand. There are several elements to control to create a complimentary visual for video conferencing: lighting, colour, shape, and texture.

The VC lighting system creates loop lighting, where a small shadow of the subjects noses on their cheeks and avoids dark shadows around the eyes. The light source is slightly higher than eye level and about 30-45 degrees from the camera and bounces light off the back wall to distribute a defused, soft light evenly across the face. The rear downlight against the back wall provides a halo effect, a flattering contrast around the head.

Whilst your Focus pod can be upholstered in any colour, on the desk wall, we recommend using natural tones that reflect a flattering colour across the face and the introduction of subtle texture can introduce interest and create visual privacy too.



boss

Mews

Connect

A meeting space designed for visual and acoustic privacy. Controllable lighting creates a softer space to focus and share ideas. Ventilation that maintains comfortable temperature and quality of air over longer periods.



Ergonomics

Comfort & Performance



Air Quality & Temperature

Our new ventilation system allows fresh air to be drawn in - hot air extracted out. All pods are also set to deliver 12 air changes per hour as a 'nominal' setting. Providing quality air flow and a stimulating atmosphere whilst maintaining the ambient temperature.

Acoustics

Mews offers high levels of acoustic insulation, achieved through innovative sound absorbent wall panels - disconnecting you from the wider environment to focus, and providing acoustic privacy for calls.

Connectivity

Power to recharge USB A+C with HDMI connectivity to a screen recommended size 32".

Tables

Standard tables have an anti microbial Fenix top and rounded corners to maximise on space.

Mews

Connect Open

An informal meeting space designed for keeping in touch with your space and people around you. The slatted ceiling creates an open well lit space with different level of attachment.





Mews
Collaborate

boss

Mews

Collaborate

The space around the pods delineated by curtains on the Mews grid system, creates spaces perfect for collaboration and informal lounge settings.

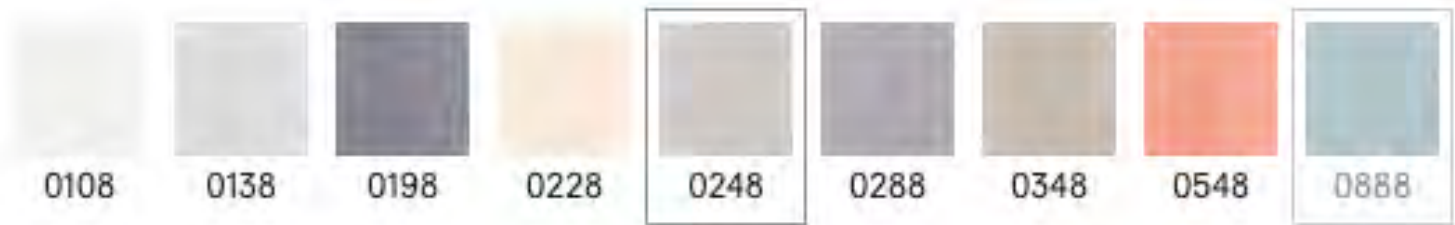




Mews Curtains

Approved Kvadrat Options

Melu Acoustic



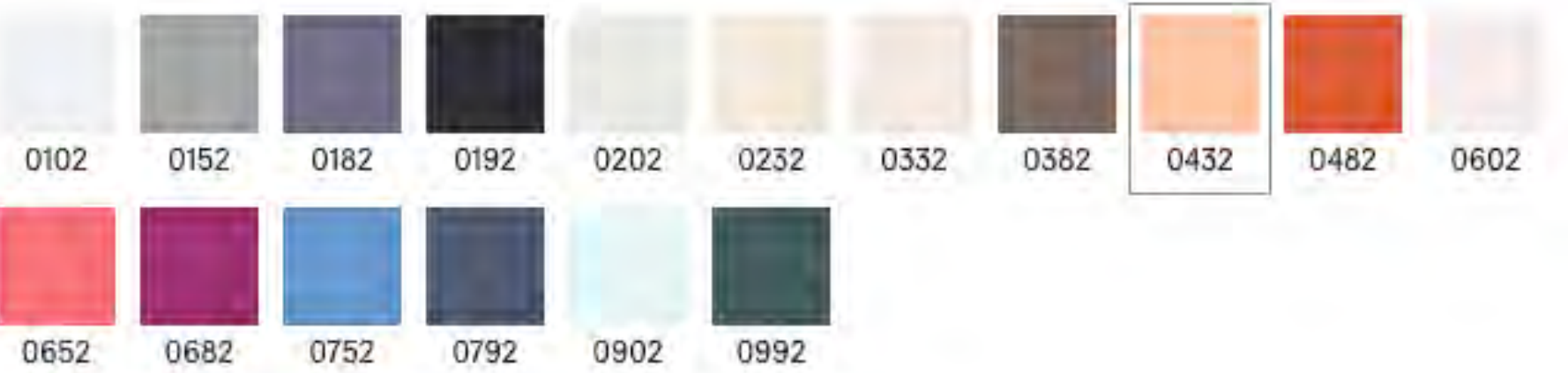
Ginger 2



Daybreak 2



Dawn 2



Haze



Drops Acoustic



Sustainability of a Box

We have gone to great lengths to minimise our material content and environmental footprint and we have worked extremely hard to create the healthiest material ingredients content possible. All our products go through VOC testing to standards for use in office environments. The combined recycled aluminium content for extrusions and castings is an incredibly high 87.5%. A number of the fabric ranges available are made from 100% recycled plastic bottles. We don't use any materials that appear on red lists.

The core pod consists of aluminium upholstery and glass. All the glass we use is 100% recyclable. Mews was designed and built with longevity in mind, using quality materials that will stand the test of time. We have scrutinised every material choice to provide luxurious experience and environmental and economic efficiency at every level.

Why **Mews?**

9 Reasons

- Increased need for private video conferencing and focus space.
- Effective use of social spaces around the pods.
- Comfortable proportions for users and compact footprint.
- Simple to specify and plan.
- Easy to 'hack' and make stylish and unique configurations.
- Diverse modules to build landscapes perfect for the users needs.
- Specification easily updated and modified
- Acoustic & visual privacy
- Environmentally sound construction

Mews

In Details

boss

Materiality & Texture



Features



Mews

Product Partners

boss

Mews Product Partners

Mews
Focus



Paloma



Ola



Trinetic

Mews
Open & Connect



Myriad
Mews Version



Hemm
Mews Version



Reef
Mews Version

Mews

Specification

boss

Mews

Standard Features



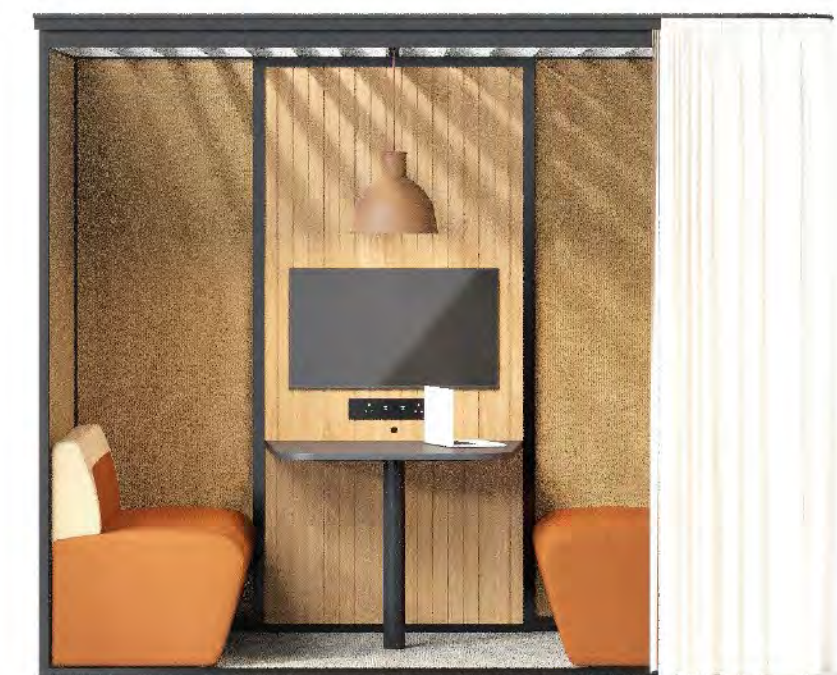
Mews
Focus

- POD Structure, inc brush seal to door, Black RAL9005 frame, plinth, Band 1 fabric, 6mm toughened glass, Levelling plinth
- Work table in Black Fenix finish, fixed
- Airflow unit
- Acoustic roof mat
- Illuminated shelf, over desk
- Ultra low glare lighting 2x units, wireless switch
- Carpet Modulyss Grind 130
- Muuto Coat Hooks (x2)
- Desktop power unit, 2x power, 2x USB (A+C)
- Flow/Ollin laptop arm
- Glazing bars



Mews
Connect

- POD Structure, inc brush seal to door, RAL9005 frame, Cable Column in Cork, 2x Power, Twin USB charge, Band 1 fabric, 6mm toughened glass panels, levelling plinth
- Central Table, black Fenix & leg
- AV pack, inc TV bracket, 1x power for TV, HDMI for TV, HDMI input
- Airflow unit
- Acoustic roof mat
- Ultra low glare recessed LED downlights
- Carpet Modulyss Grind 130
- Pendant Light Muuto Unfold
- Acoustic rear wall, Band 1 fabric
- Glazing bars



Mews
Open

- POD Structure, open front, RAL9005 frame, plinth, PET Roof, Cable Column in Fluted Oak/Cork, OE Petra Unit inc 2x Power, Twin USB charge, Levelling plinth
- Central Table, black Fenix & leg
- Acoustic rear wall, Band 1 fabric
- AV pack, inc TV bracket, 1x power for TV, HDMI for TV, HDMI input
- Pendant Light Muuto Unfold
- Carpet Modulyss Grind 130



Mews
Collaborate

- Mews 'U' frame with internal curtain on 3 sides in Kvadrat Dawn

Mews Focus

Specification



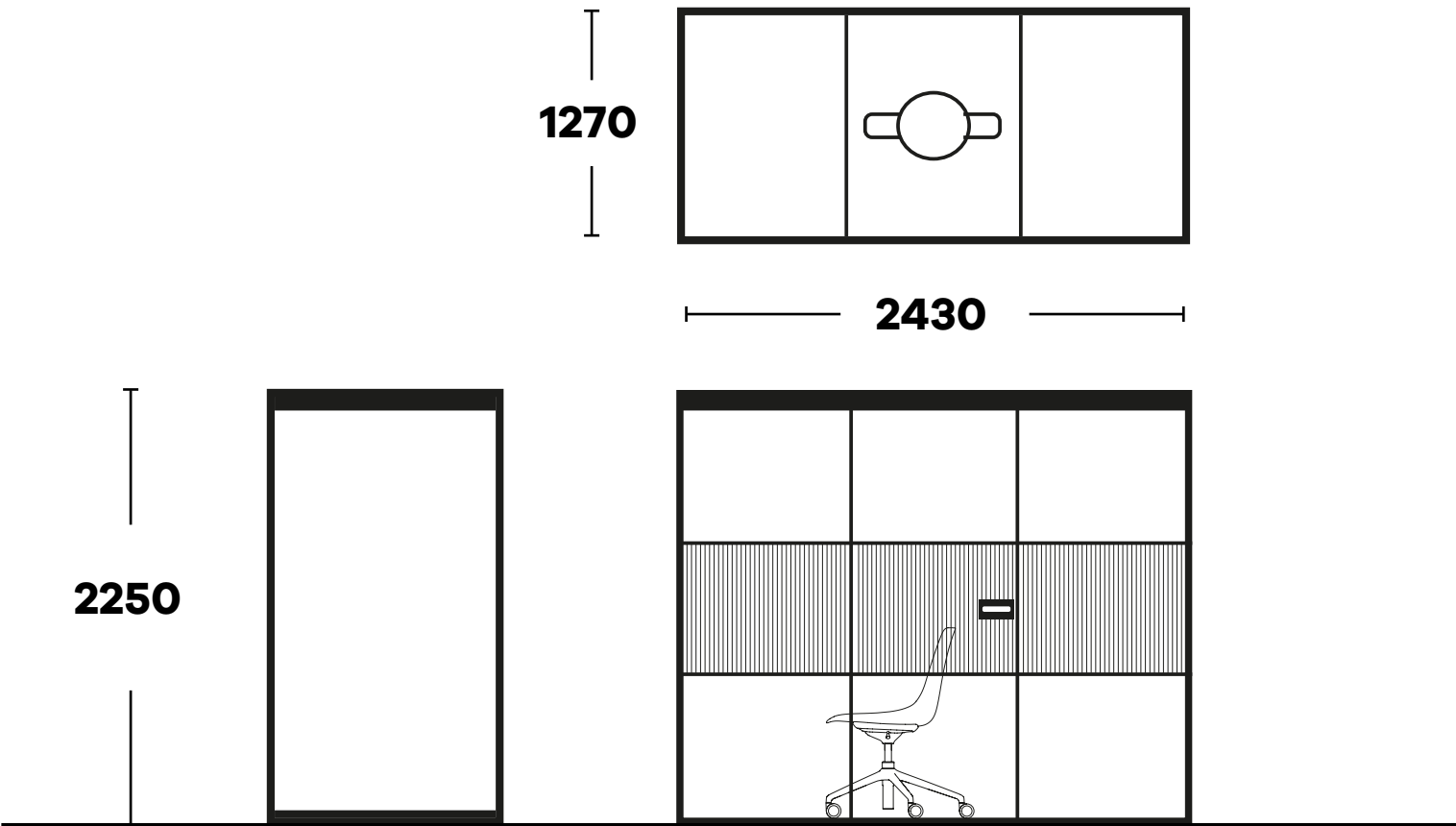
Mews

Focus

- POD Structure, inc brush seal to door, Black RAL9005 frame, plinth, Band 1 fabric, 6mm toughened glass panels, Levelling plinth
- Work table in Black Fenix finish, fixed
- Airflow unit
- Acoustic roof mat
- Illuminated shelf, over desk
- Ultra low glare lighting 2x units, with wireless switch
- Carpet Modulys Grind 130
- Muuto Coat Hooks (1x small, 1x large)
- OE Ply desktop power unit, 2x power, twin USB charge (A+C)
- Flow/Ollin laptop arm
- Glazing bars (to five glass panels and door)

Options

- Band 2 fabric to both short ends
- Band 3 fabric to both short ends
- Privacy Reeded glass - (per wall)
- Fabric rear wall, Band 1
- Fabric rear wall, Band 2
- Fabric rear wall, Band 3
- Non illuminated rear shelf
- Acoustic glass to rear wall
- External Whiteboard panel
- External Fluted Oak panel
- External 10mm Cork panel



Mews Connect

Specification

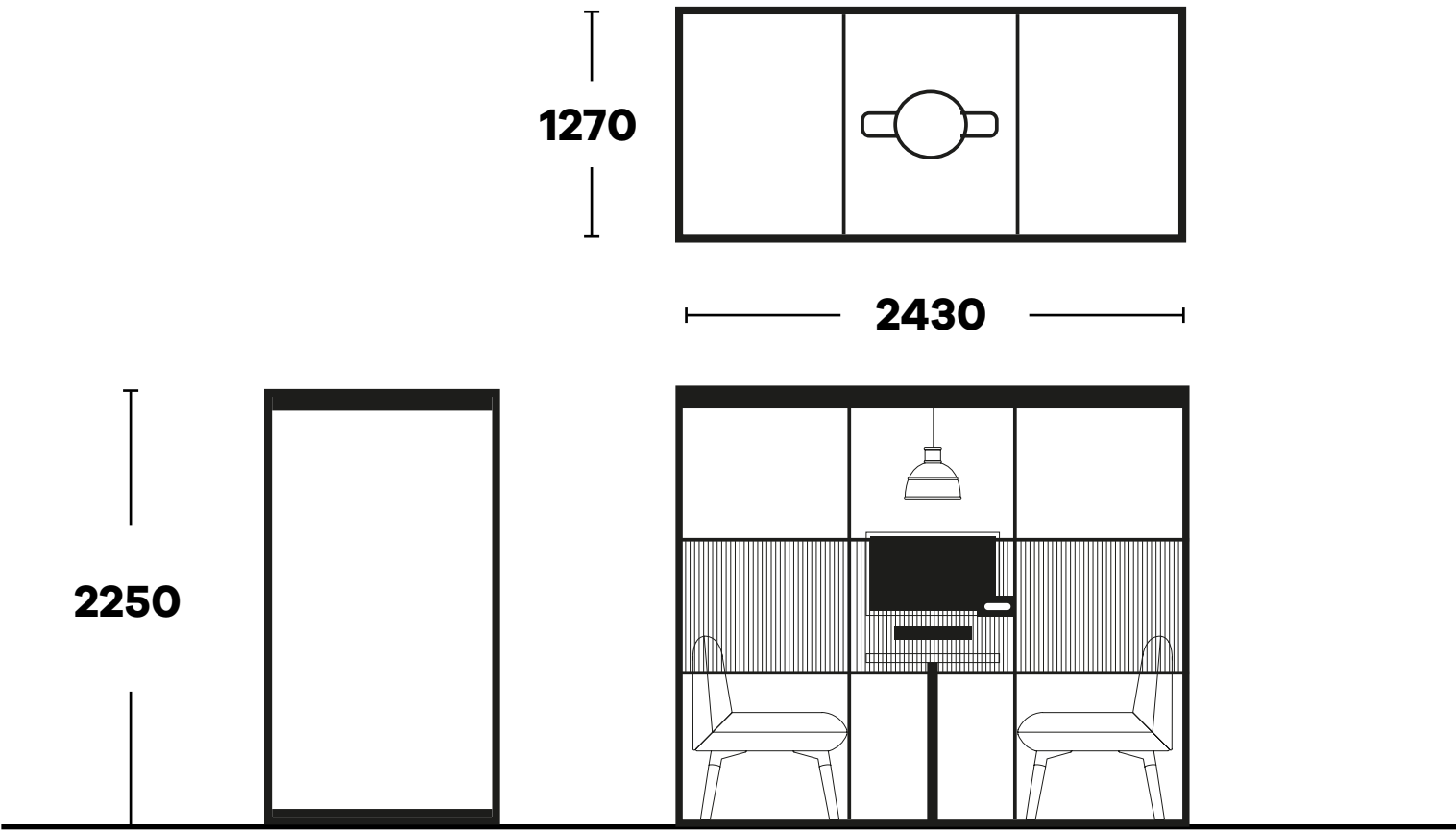


Mews Connect

- POD Structure, inc brush seal to door, RAL9005 frame, Cable Column in Cork, 2x Power, Twin USB charge, Band 1 fabric, 6mm toughened glass, levelling plinth
- Central Table, black Fenix & leg
- AV pack, inc TV bracket, 1x power for TV, HDMI for TV, HDMI input
- Airflow unit
- Acoustic roof mat
- Ultra low glare recessed LED downlights
- Carpet Modulys Grind 130
- Pendant Light Muuto Unfold
- Acoustic rear wall, Band 1 fabric
- Glazing bars

Options

- Band 2 fabric ends & back wall
- Band 3 fabric ends & back wall
- Fluted oak face to internal column
- Privacy Reeded glass - (per wall)
- Band 3 fabric ends & back wall
- Laminated glass x2 front panels
- External cladding panel, 10mm Cork
- External Whiteboard panel
- External Fluted Oak panel
- Specialist External Cladding



boss

Mews Open

Specification



Mews Open

- POD Structure, open front, RAL9005 frame, plinth, PET Roof, Cable Column in Fluted Oak/Cork, OE Petra Unit inc 2x Power, Twin USB charge, Levelling plinth
- Central Table, black Fenix & leg
- Acoustic rear wall, Band 1 fabric
- AV pack, inc TV bracket, 1x power for TV, HDMI for TV, HDMI input
- Pendant Light Muuto Unfold
- Carpet Modulyss Grind 130

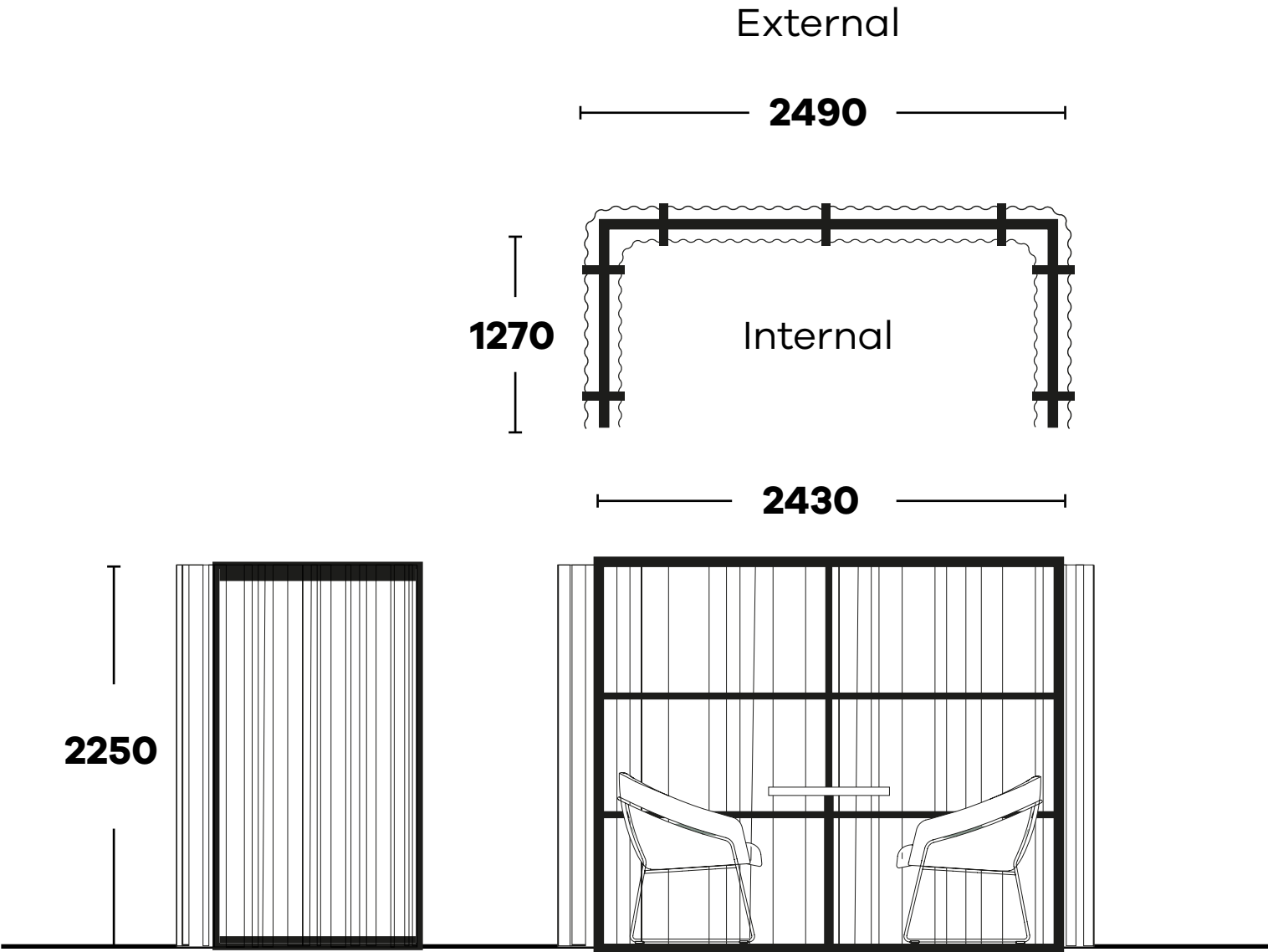
Options

- Band 2 fabric ends & back wall - Internal
- Band 3 fabric ends & back wall - Internal
- Fluted oak face to internal column
- Band 3 fabric ends & back wall - External
- External cladding panel, 10mm Cork
- External Whiteboard panel
- External Fluted Oak panel
- Specialist External Cladding



Mews Collaborate

Specification & Pricing



Mews Collaborate

- Mews 'U' frame with internal curtain on 3 sides in Kvadrat Dawn

Curtain options - Kvadrat Dawn 2

Straight Joining Frame

- Curtain internal
- Curtain External

L Joining Grid (L&R)

- Curtain internal
- Curtain External

U Free Standing

- Curtain internal
- Curtain External

Curtain options - Kvadrat Ginger 2

Straight Joining Frame

- Curtain internal
- Curtain External

L Joining Grid (L&R)

- Curtain internal
- Curtain External

U Free Standing

- Curtain internal
- Curtain External

Curtain options - Kvadrat Daybreak

Straight Joining Frame

- Curtain internal
- Curtain External

L Joining Grid (L&R)

- Curtain internal
- Curtain External

U Free Standing

- Curtain internal
- Curtain External

Mews



www.bossdesign.com/Mews

boss