

Head Office:

Frem Group
Concept House
Upton Valley Way East
Northampton
NN4 9EF
United Kingdom

+44 (0)1604 756567

London Showroom:

20-24 Kirby Street
London
EC1N 8TS

info@frem.co.uk

 @frem_furniture

 linkedin/company/fremgroup

 instagram/fremgroup



www.frem.co.uk



IMPRESSIONS
RECEPTIONS, SURE TO IMPRESS



IMPRESSIONS

Designed and developed by Frem Group's inhouse team, the Impressions portfolio of reception furniture offers a choice of impactful and practical solutions.

Attention to detail is essential. Our motivation is to design and create reception furniture which is beautiful and impactful – a statement piece.

First impressions count. The style, image and reputation of your organisation is projected through the design of the reception space.

Each collection of furniture within the Impressions portfolio is available in a choice of materials, finishes and dimensions.

Customised, bespoke solutions can be developed as an evolution from each established range. Our inhouse design and manufacturing resources enable us to precisely match your every need and requirement.

The Impressions collection reflects our passion for exceptional design and quality.

FACET

The pinnacle of reception design, we are proud to present Facet. Clean and stylish in appearance, Facet is presented as a white solid surface or satin spray lacquered finish. Complemented with metallic detailing, the striking, modern design will create a lasting impression – a powerful statement piece.

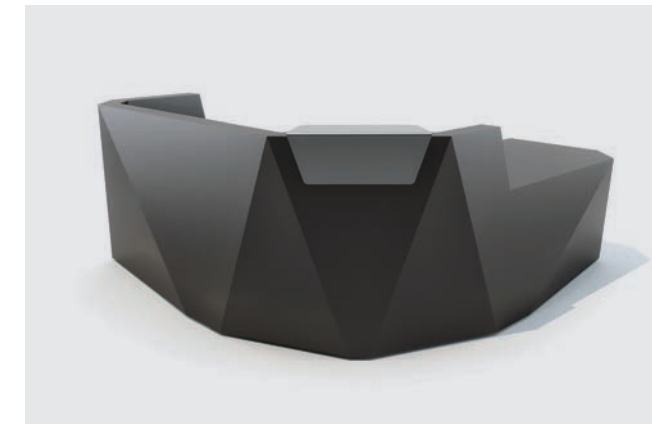




FACET

Innovation and elegance are combined resulting in a truly impactful design statement.

Incorporating functional details such as the metallic upstands and counter tops, Facet is a practical workstation too. Inherently robust, the solid surface material can be routed to include backlit lettering and logos adding extra impact for arriving guests.





SLAT

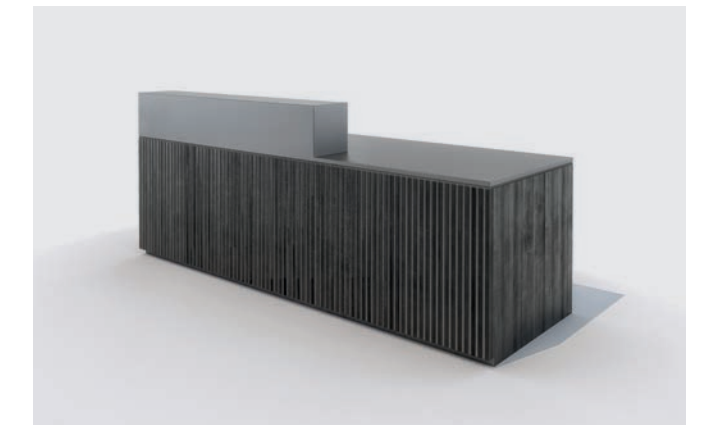
On-trend styling with a clean and sleek look, Slat is specifically designed to complement our Novus collection. Slat is offered in a choice of laminate or veneer enabling customised finishes and colour palettes.



SLAT

Slat's sophisticated design brings a modern aesthetic through the use of varying textures, colours and finishes.

Available with a choice of finishes, sizes and additional options, Slat creates an elegant and welcoming impression whilst being a highly functional workstation. The relationship to the Novus portfolio can be seen through the addition of simple steel framed table extensions and the option for routed letters or logos enhances the customisation options.



SOLIDE

Introducing Solide, a simple modular solution with clean lines to complement any reception space. Available in our standard colour finishes, with the option of MFC, laminate or veneer, this versatile range can reflect your colour scheme or be a statement design feature.

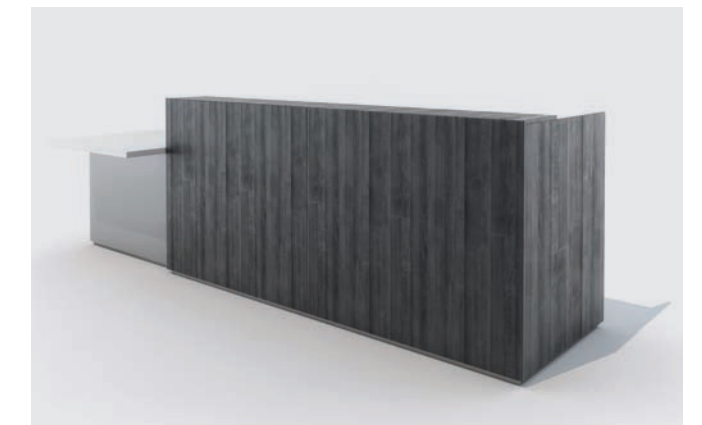
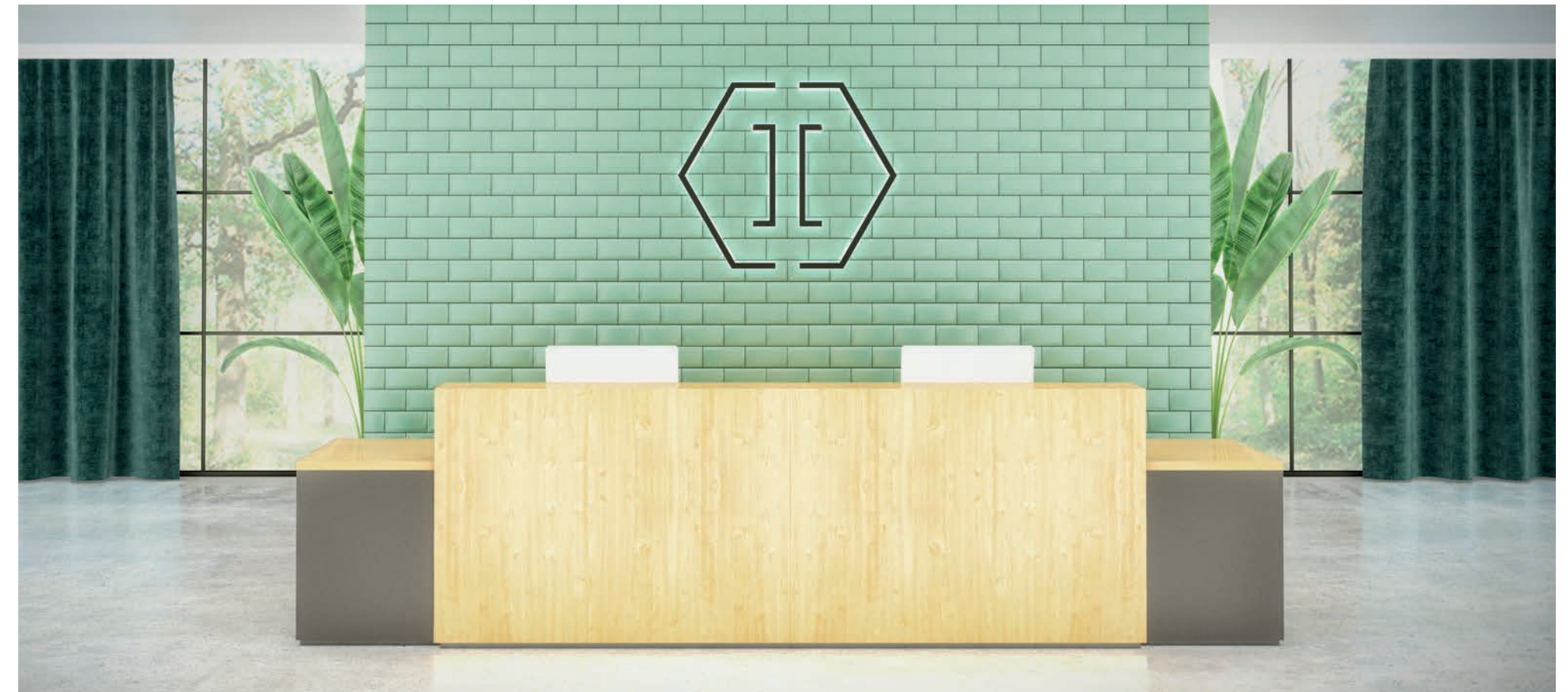




SOLIDE

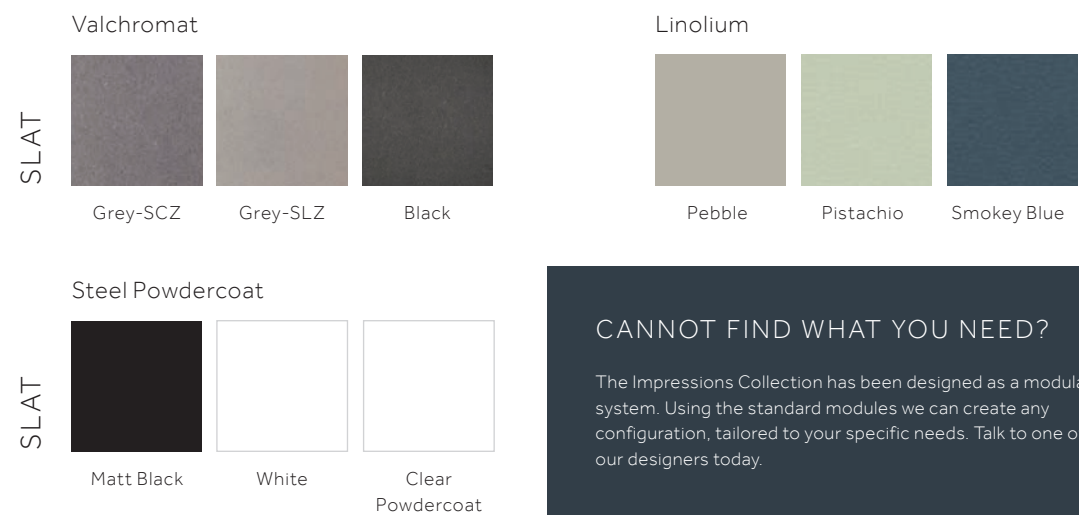
Offering practicality without any compromise on design aesthetics, Solide is a stylish, affordable solution providing an impressive welcome to arriving guests.

With a wealth of choice of modular base and top units, Solide is available in a range of colours and finishes enabling customised solutions to match corporate style and space requirements. Solide will transform any reception area to create an 'on brand' impression.



FINISHES

The Impressions portfolio offers impactful and practical solutions. Each collection of furniture has been carefully considered and designed with the highest quality choice of materials and finishes to provide receptions sure to impress.



CANNOT FIND WHAT YOU NEED?

The Impressions Collection has been designed as a modular system. Using the standard modules we can create any configuration, tailored to your specific needs. Talk to one of our designers today.

FACET DESK CONFIGURATIONS

Available in satin spray lacquer or white solid surface finishes with steel counter upstands and counter caps as standard.

Optional extras: Venaro white solid surface, patinated metal, inset logo, back lit logo, grommet, LED lighting and 3mm steel powdercoated counter upstands and caps.



FACET 3

Size (mm) W:2400 x D:900 x H:1100



FACET 4

Size (mm) W:2800 x D:900 x H:1100



FACET 5

Size (mm) W:2800 x D:900 x H:1100



FACET 6

Size (mm) W:4000 x D:1095 x H:750



FACET 7

Size (mm) W:4000 x D:1095 x H:1100



FACET 8

Size (mm) W:2800 x D:2297 x H:1100



FACET 9

Size (mm) W:3147 x D:2547 x H:1100



FACET 10

Size (mm) W:3362 x D:2395 x H:1100



SLAT DESK CONFIGURATIONS

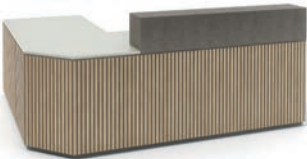
Slatted front and carcass available in Laminate/Veneer as standard. Linoleum top with Valchromat edging (Laminate/Veneer over-rider). Solid Surface counter cap only.

Optional extras: Logo inset into Valchromat/solid surface core, grommet and LED skirting.



SLAT 1

Size (mm) W:2022 x D:800 x H:1000



SLAT 2

Size (mm) W:2308 x D:1808 x H:1000



SLAT 3

Size (mm) W:2482 x D:800 x H:1000



SLAT 4

Size (mm) W:3002 x D:800 x H:1000



SLAT 5

Size (mm) W:3020 x D:1808 x H:1000



SLAT 6

Size (mm) W:3994 x D:800 x H:1000



SOLIDE DESK CONFIGURATIONS

Available in MFC, Laminate or Veneer finishes. Curved desk sections are a combination of Laminate and MFC.

Optional extras: Grommet and LED skirting.



SOLIDE 1

Size (mm) W:3320 x D:850 x H:1050



SOLIDE 2

Size (mm) W:2950 x D:850 x H:1050



SOLIDE 3

Size (mm) W:4895 x D:2248 x H:1050



SOLIDE 4

Size (mm) W:4018 x D:2248 x H:1050



SOLIDE 5

Size (mm) W:3350 x D:850 x H:1050



SOLIDE 6

Size (mm) W:4180 x D:1860 x H:1050